

LGmobile Provides Peace of Mind in Montgomery County

Montgomery County, Tennessee



Welcome to Montgomery County, Tennessee, where Mother Nature's obstacles would discourage all but the most determined law enforcement professionals.

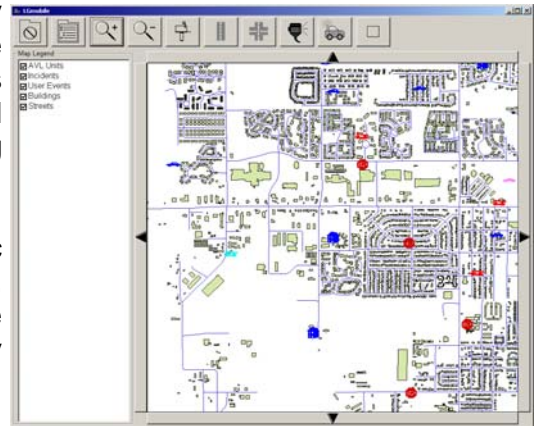
The Montgomery County Sheriff's Department is responsible for a large geographic expanse which includes non-contiguous areas divided by the Cumberland River. This leads to Obstacle No. 1: there is only one bridge connecting the east and west parts of the county, and the City of Clarksville, located in the center of the county, doesn't use coordinating communications systems.

Obstacle No. 2: the hilly terrain in Montgomery County provides an inhospitable environment for communications. Coverage is a challenge.

Obstacle No. 3: because the county itself is sparsely populated, only a small number of deputies are assigned to patrol the vast territory.

Fortunately, Montgomery County found a solution which levels the playing field and allows the Sheriff's Department to overcome the logistical challenges and deliver outstanding service to county citizens.

The solution is Geographic Technology Group's (GTG) LGmobile, a product which allows for the distribution of mapping to public safety vehicles in the field. It works with HTE public safety applications, including CAD400 and CRIMES.



LGmobile

"The most important thing for our officers is to know they are not alone, even when they are in a remote area. They need to know how quickly help can arrive when they need it," said Joe Sweeten, a programmer/analyst in Montgomery County's Information Systems Department. "Back-up is the ultimate resource in law enforcement.

"LGmobile helps us see where everyone is at any one time. It's very visual."

Citizen expectations are high in Montgomery County, home of Fort Campbell, one of the largest military installations in the world, Austin Peay University, and Clarksville, one of Tennessee's fastest growing cities.

"We are expected to have the most advanced technology available," Sweeten said. The county recently purchased 50 LGmobile licenses for use in all 32 police units. The Sheriff's Department has used HTE CAD and CRIMES for several years, and also uses GTG's LGdispatch.

"LGmobile gets the maps into the officer's vehicle. It's a simple concept with very important implications," he said.

“We have a relatively small force for the large area we cover, and one deputy may cover several beats. With LGmobile, we can always see exactly where the cars are and how far away from each other they are. A deputy is never missing, and never alone.”

LGmobile is based on ESRI technology and uses standard TCP/IP communications. It connects directly with the HTE CAD environment.

Product functions include:

- Mapping of active CAD calls;
- Mapping of AVL-enabled vehicles;
- Pan/zoom;
- Find street/intersection/address tools; and
- A large screen layout which supports a touch screen environment on MDC.

“We are extremely happy with this service,” Sweeten said. “I wish it had been available years ago.”

Geographic
Technologies
Group

*Understanding
Local Government*

Geographic Technologies Group
1202 Parkway Drive
Goldsboro, NC 27534
Phone: 1.888.757.4222
Fax: 919.759.0410
E-mail: info@geotg.com