

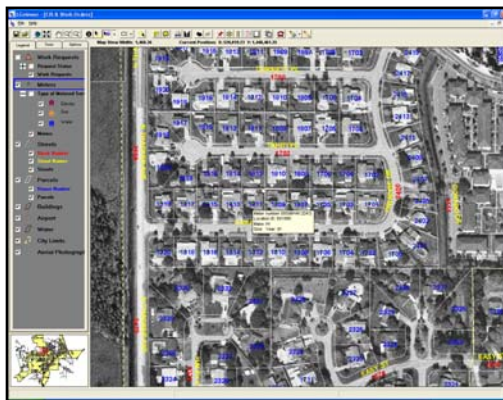
A Small City with Big City Mentality

Missouri City, Texas



Searching for a small city using big city technology? Look no further than Missouri City, Texas (pop. 60,000) located southwest of Houston. Missouri City is comprised of a 30 square mile area and is protected by a police department that employs 63 sworn officers and an additional 22 civilian employees.

In an effort to better utilize manpower and other resources, the City turned to Geographic Technologies Group after seeing several product demonstrations at an HTE Users Group Conference. The LG suite of products seemed to be what the City was lacking, and incorporating LGcrimes, LGdispatch, and LGviewer has since streamlined the functions of the police department as well as the planning and inspections departments, and has helped increase their effectiveness and ability to better serve the public.



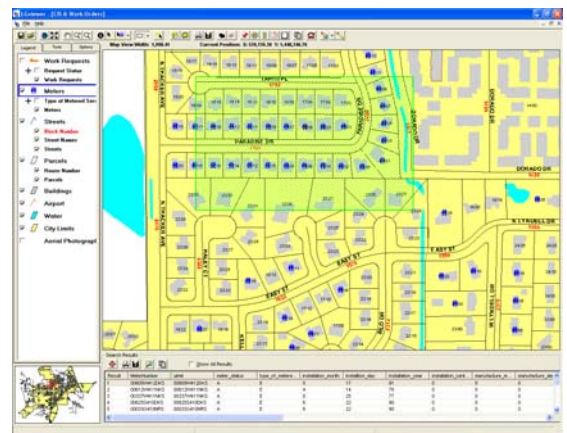
It has been two years since the City adopted the new technology and the results have been dramatic. The police department had been relying on the canned map that is included with the HTE CAD IV product. "That map was not very user-friendly and was difficult to keep updated," said Robert M. Girndt, Radio Systems Administrator for the City of Missouri. "We were looking for another solution that would combine our HTE CRIMES data and a map of our city. If we did need any type of map, we would have to rely on our GIS department to furnish it for us. Then we would have to pin-

point the incidents (offenses) on the map ourselves by hand. This was very time consuming."

LGcrimes was a natural choice to resolve those mapping and data issues. LGcrimes allows the department to create crime reports for the Mayor and City Council –the report can focus on particular types of crimes and districts as needed, as well as produce a comprehensive overview of crime trends and statistics for any designated period of time.

The Detective Division is able to use LGcrimes to generate aerial photos of a specific residence prior to executing a search warrant and the SWAT team and Warrant officers are able to do the same – all from their desk.

Missouri City also runs LGdispatch continuously in the dispatch center. Telecommunicators are able to more accurately guide officers to some of the newer areas and subdivisions in the city with the help of LGdispatch. Life flight, the area's air ambulance service, has been directed to accident scenes via geographic coordinates rather than a physical address.



LGviewer is used mainly by the Planning and Inspections Departments. "The staff is very excited that they now have a product that can give them a real-time, up to date view of what is happening in the areas of building permits and inspections," added Girndt.

Case Study:
A Small City with Big City Mentality
Missouri City, Texas

Geographic
Technologies
Group

Understanding
Local Government

One of the many strengths of the GTG products as noted by Girndt is the fact that they are user-friendly. "GTG has developed their products to the extent that the functionality of each different application is essentially the same," he said. "That way there is no learning curve from one program to the next."

Its one thing to provide a product, but it's another thing to service that same product. "The support that we receive from GTG is excellent," adds Girndt. "Anytime that a support issue arises someone will always be on hand to help. We have also found that GTG is ready to listen to us when we recommend a change to an application."



Geographic
Technologies
Group

*Understanding
Local Government*

Geographic Technologies Group
1202 Parkway Drive
Goldsboro, NC 27534
Phone: 1.888.757.4222
Fax: 919.759.0410
E-mail: info@geotg.com