

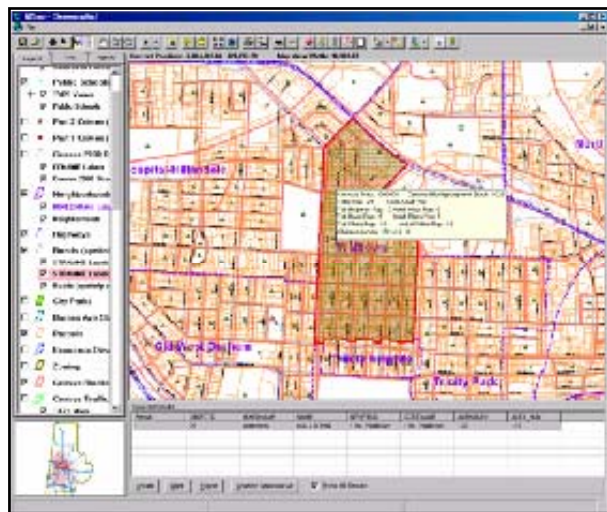
GIS from Paper Maps to an Invaluable Tool

Halifax County, North Carolina



Like many North Carolina counties, Halifax County has rural agrarian roots. The County had slowly transitioned from maintaining tax maps by hand to maintaining a GIS dataset comprised of data that is beneficial for each County department.

The County had followed the traditional path of attaining orthophotography and moving to a parcel based GIS. As is typical with many GIS implementations, only a



select few staff had access to the data, although there was a need for the entire organization to have quick and easy access to the County's investment. The County's GIS Coordinator, Doris Hawkins, wanted to get the "GIS out of the back office and into the hands of County staff". Mrs. Hawkins knew that she wanted a tool that allowed her users to access all pertinent GIS layers via a very user friendly interface. "I wanted a tool that required almost no training yet allowed users full access to our GIS investment". Mrs. Hawkins selected GISmo from Geographic Technologies Group (GTG). She had seen the ease of

use of this tool and knew that it had been designed for use by local government employees.

The benefits of equipping staff with GISmo were immediately evident. GISmo was placed on the desktop of a majority of departments, and staff were given a quick overview of how to use the application.

Elections staff have been able to use GISmo to greatly improve their workflow when notifying voters of district changes. "Before GISmo, research was done manually by having to leave one's workstation to go to hard copy maps stored in various locations, just in order to pinpoint addresses and other jurisdictions," said Jackie Taylor, Director of Halifax, County Board of Elections. "Being able to pinpoint an address and special districts at the touch of a button has been more than helpful." GISmo has been an exceptional asset to the Board of Elections.

Hawkins shared the same praises. "GISmo has become an indispensable tool for Halifax County," she said. "We have enabled 32 users with the technology and the demand continues to grow. We have seen a ten-fold increase in usage of our GIS investment. GIS is now forever an integral part of the daily routine of Halifax County staff." Adds Taylor: "This program has been quite beneficial, as the Elections Office can research roads, precincts, county commissioners' districts and other jurisdictions in a matter of seconds."

Geographic Technologies Group
1202 Parkway Drive
Goldsboro, NC 27534
Phone: 1.888.757.4222
Fax: 919.759.0410
E-mail: info@geotg.com

Case Study:
GIS from Paper Maps to an Individual Tool
Halifax County, North Carolina

Geographic
Technologies
Group

*Understanding
Local Government*