

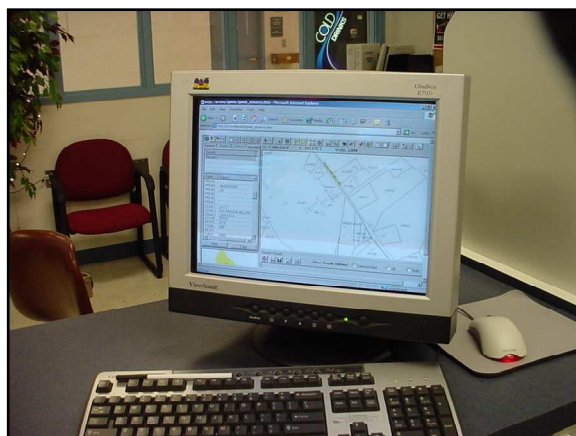
## Intranet Solution Helps us Keep Ahead of the Race

City of Plano, Texas



In North Texas, the City of Plano is also rolling out LGweb to its departments.

Few American cities have been shaped by technology like Plano. In the 1960s, technology firms began to move into the Dallas-area city and have dominated the business community ever since. Plano today has nearly 250,000 residents and is the home to corporate giants.



**LGweb**

Cynthia O'Banner, the City's Director of Code Enforcement, was one of the first department managers to deploy LGweb. "We're excited about the potential, and we already see the product makes it easier to plan our work flow and to focus in on where our problem areas are. All the information we need to operate is available at the touch of a button. Seeing on a map where we have activity is very different from just studying a database," she said.

"It's great to have visible spatial data at our fingertips, to be able to access reports quickly and easily."

Plano's former GIS Analyst, Tessa Allberg, said LGweb's ability to make GIS data to non-technical users is one of its key advantages. "It's a nice way to marry lots of layers. For example, being able to view both existing GIS information and data from the AS/400, like which parcel a building permit is located in, at the same time is enormously helpful."

Plano and St. Mary's County are among municipalities nationwide discovering the benefits of LGweb.

"Our GTG LG products help us keep up with the demand and in today's demanding environment, we need all the tools we can get," Allberg said.

Geographic  
Technologies  
Group

*Understanding  
Local Government*

Geographic Technologies Group  
1202 Parkway Drive  
Goldsboro, NC 27534  
Phone: 1.888.757.4222  
Fax: 919.759.0410  
E-mail: [info@geotg.com](mailto:info@geotg.com)