

Unique and Sophisticated Internet GIS Solution

City of Dublin, Ohio



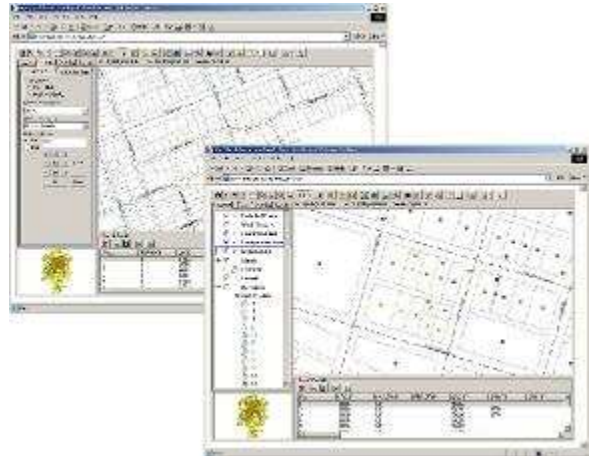
In Dublin, Ohio, population 30,000, GIS Analyst Scott Brock said the precision and accuracy of information delivered by LGweb is a good fit for his municipality, which has some of the strictest planning and zoning regulations in America. "We have a Planning Division that is larger than those of other cities our size, and we have extremely complicated rules that we enforce strongly. LGweb lets us combine Web data with our own databases to produce information we can use in making planning and zoning decisions."

Also an HTE user, Dublin first struggled for six months with a competitor product to LGweb. "We just could not get the product to integrate with our HTE databases, and that was key. We discovered LGweb and decided to make the transition," Brock said. "The ease of LGweb was a welcome relief. We got it set up in less than a week and found training and maintenance has been a breeze."

Brock said that in Dublin, as in St. Cloud, work scheduling has been simplified with LGweb.

"Our code enforcement people are assigned to cover specific sections of the city. They used to have to carry around seven or eight pieces of paper to see where their work for the day was located. Now they just turn on the civil engineering layer of the map and see where they need to go. They print out only their cases. It's much easier."

Brock said Dublin presents another challenge for GIS functions: the City is located in three counties. "It can be a pretty big hassle dealing with the various local data, in three different formats, but we've been able to work through it. We have a very sophisticated set-up here."



Geographic
Technologies
Group

*Understanding
Local Government*

Geographic Technologies Group
1202 Parkway Drive
Goldsboro, NC 27534
Phone: 1.888.757.4222
Fax: 919.759.0410
E-mail: info@geotg.com